



WESTERN GREEN
ENERGY HUB

Green Energy From WA Mirning Country



Special thank you to Mirning Artist Naomi Bonney – WA for original artwork.

ACKNOWLEDGEMENT OF COUNTRY

We recognise and respect the sacred nature of the land on which WGEH is located together with its custodians who have always been, who are, and who always will be, the Mirning people.

We pay the same recognition and respect to the land on which we work and to its custodians; and we further extend our recognition and respect to include the rest of Australia and all its First Nations Peoples.

MESSAGE FROM RAYMOND MACDONALD – WGEH CEO

The Western Green Energy Hub (WGEH) green energy project is one that I believe will help underpin the aspirations of the Traditional Owners of the land on which the project is largely located, the Mirning People.

From the very start of WGEH, the company and Mirning Traditional Lands Aboriginal Corporation RNTBC (MTLAC) agreed to a Corporate Charter, which would help to drive the required ethics, values, conduct and behaviour right across the business. The WGEH project is very long- term and, as we move from one generation to another, the Charter will help set a positive, reliable, and predictable way forward.

In the same way, the Corporate Charter will ensure that the WGEH corporate structure and governance is observed with integrity. It recognises the continued rights of shareholders and encourages on-going collaboration and learning.

As we think about these ideas and principles, we also need to consider how we further use the Charter to deliver great outcomes for WGEH, its neighbours and all its stakeholders

There has been a huge amount of work by many to get our project to the present stage, and there is a lot more work to come. I greatly appreciate all past, present, and future efforts and remain committed to ensuring that the project delivers what it set out to do.

I trust this booklet helps you understand what we are doing with the WGEH project, and why we are doing it. I look forward to providing more information in the future.

Raymond Macdonald

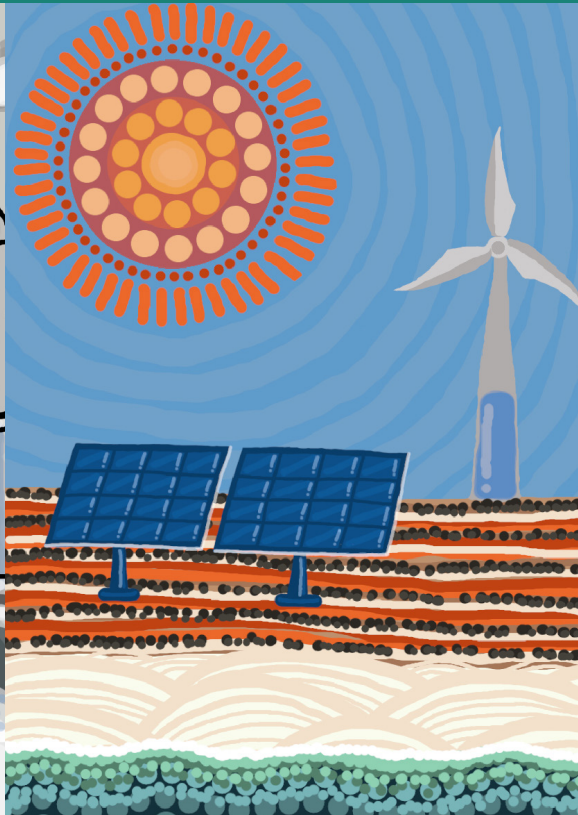
CONTENTS

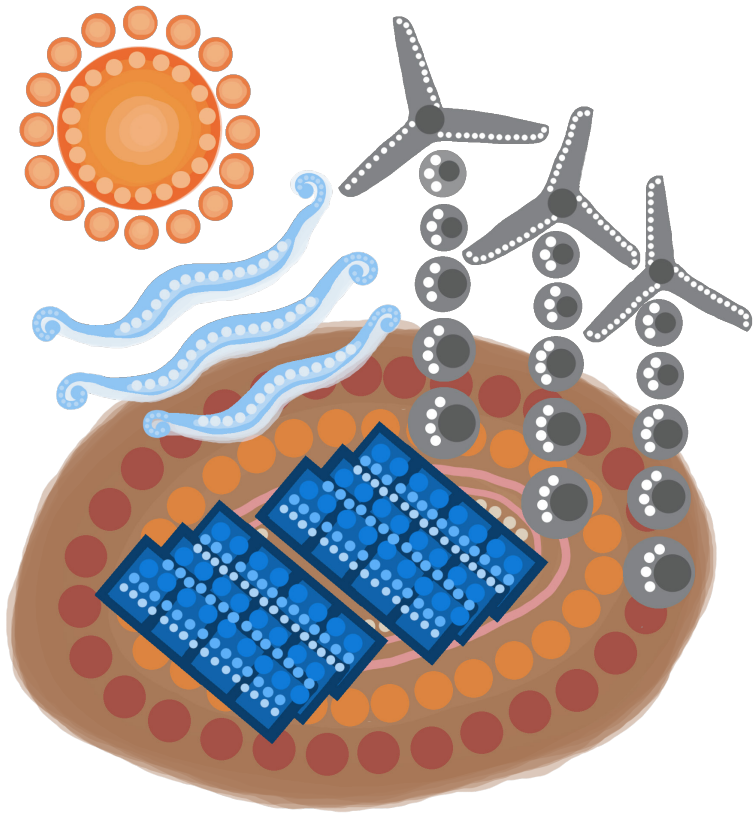
WHY DO WE WANT TO BUILD THE WESTERN GREEN HUB?	1
WHAT IS RENEWABLE ENERGY?	2
WHAT IS GREEN HYDROGEN?	3
STEPS IN PRODUCING GREEN HYDROGEN?	4
GREEN ENERGY FROM WA MIRNING COUNTRY?	5
WHO IS INVOLVED IN THE PROJECT?	6
WA MIRNING PEOPLE	8
WHAT WILL STAGE 1 OF THE WGEH PROJECT LOOK LIKE?	9
INFORMED COMMUNITIES	11
PRESERVATION & PROTECTION OF CULTURAL HERITAGE & ENVIRONMENT	12
TRAINING, EMPLOYMENT & ECONOMIC DEVELOPMENT	13
STRONG FAMILY STRONG COMMUNITY	14
WORK COMPLETED SO FAR	15
WHAT NEXT?	16

WHY DO WE WANT TO BUILD THE WESTERN GREEN ENERGY HUB?

Western Green Energy Hub (WGEH) wants to help reduce the impacts of climate change by generating sun and wind energy on WA Mirning Country.

WGEH is a phased project which will last for many generations. It will offer many opportunities locally and regionally and will assist Australia to be a major global player in a pollution-free future.





WHAT IS RENEWABLE ENERGY?

Renewable energy comes from natural resources like wind, water, and sunlight. Solar panels and wind turbines are examples of how sun and wind is used to make this energy. It's also called "clean" or "green" energy because it doesn't cause pollution.

Over several project phases, WGEH will use wind turbines and solar panels to generate green power, which will then create green hydrogen through a process called electrolysis.

WHAT IS GREEN HYDROGEN?

Hydrogen is the most abundant element in the universe, but it must be separated from other compounds to be used as an energy source. This can be done through electrolysis, a process that uses electricity to split water (H₂O) into oxygen (O₂) and hydrogen (H₂).

WGEH will produce green hydrogen by using wind and solar energy sources to power this process. Since renewable energy is used, no carbon emissions are created during hydrogen production.

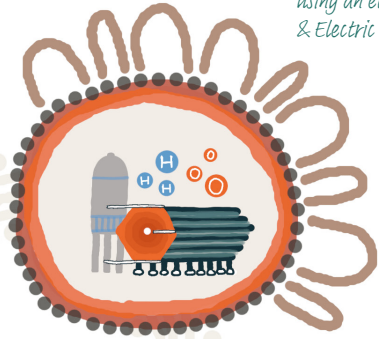
Green hydrogen has many uses, including powering electric cars and trucks and large ships, producing fertilizer, and helping to reduce carbon emissions in the steel industry (green steel).

STEPS IN PRODUCING GREEN HYDROGEN

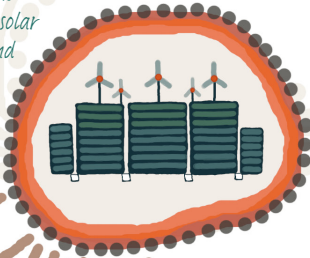
Ocean water is purified



Water is split into Hydrogen & Oxygen using an electrolyser & Electric current



Electrolyser is powered by solar panels & wind turbines



Hydrogen used as Fuel Locally or converted into Ammonia or other Man made gases



Ammonia or other man made gases is shipped to places like Korea or Japan, then reconverted to Hydrogen & used as fuel

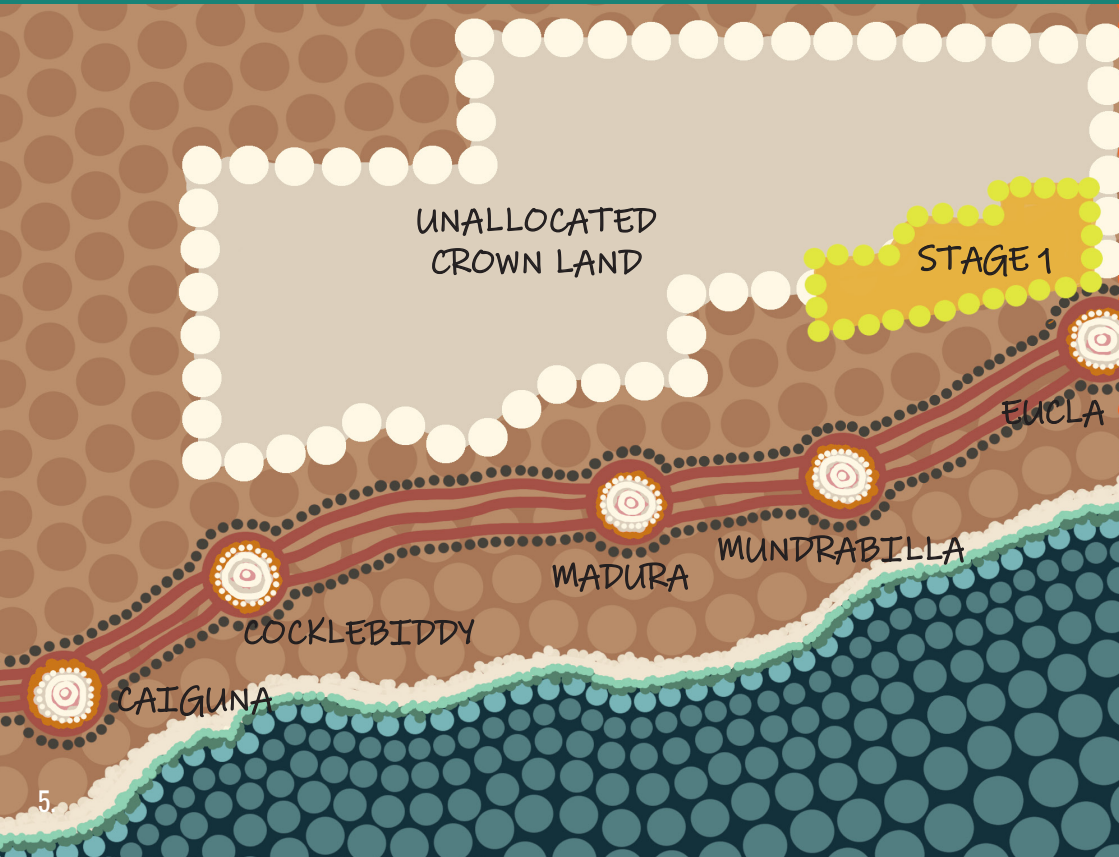


GREEN ENERGY FROM WA MIRNING COUNTRY

WGEH is a phased wind, solar, and green hydrogen project proposed for Mirning Country in the south-east part of Western Australia.

In Stage 1, WGEH will install about 6-8 GW of wind and solar power, and around 330,000 tonnes each year of green hydrogen.

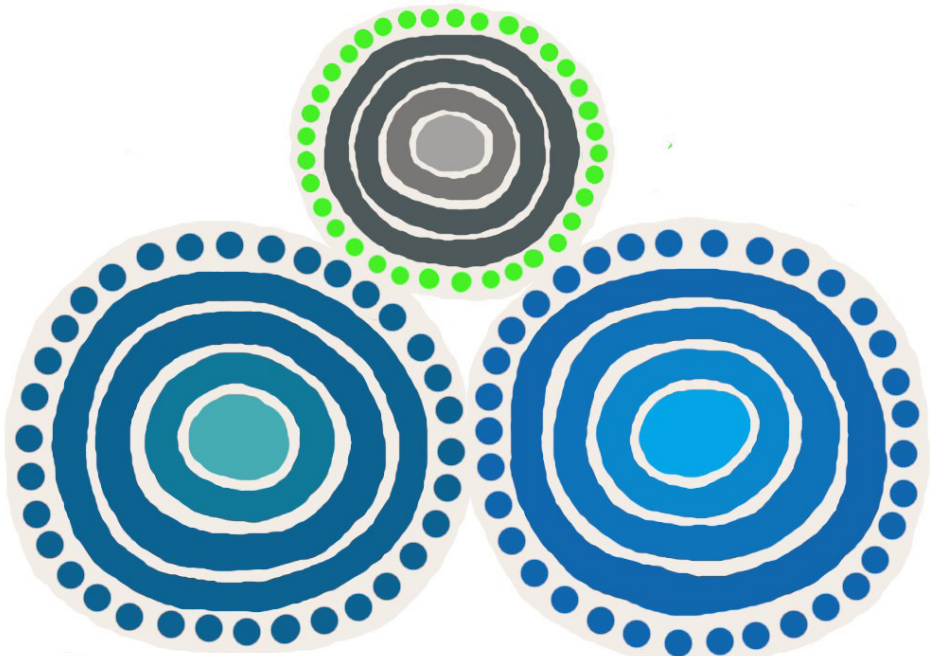
When fully developed, the project could generate around 70 GW of renewable energy and produce around 3.5 million tonnes of green hydrogen each year.



WHO IS INVOLVED IN THE PROJECT?

The WGEH project is a partnership between Mirning Green Energy Limited (MGEL – 10%), Intercontinental Energy (ICE – 46%) and CWP Global (CWP – 44%).

The project aims to set new benchmarks in how ultra-scale projects can and should be built in partnership with Traditional Owners.





Mirning Green Energy Limited (MGEL) is a commercial subsidiary of MTLAC. MGEL was established in early 2021 to manage the 10 per cent shareholding in the project. If the project is approved MGEL can choose to maintain or sell some of its shares. MGEL has three directors on its board and a permanent seat on the WGEH Board.



InterContinental Energy (ICE) has been leading the development of top-tier green fuel hubs since 2014, aiming to produce large-scale green hydrogen and speed up the shift to clean energy. ICE has a skilled global team managing major projects across Australia and the Middle East. Strategic investors include the Singapore Sovereign Wealth Fund (GIC) and Hy24.

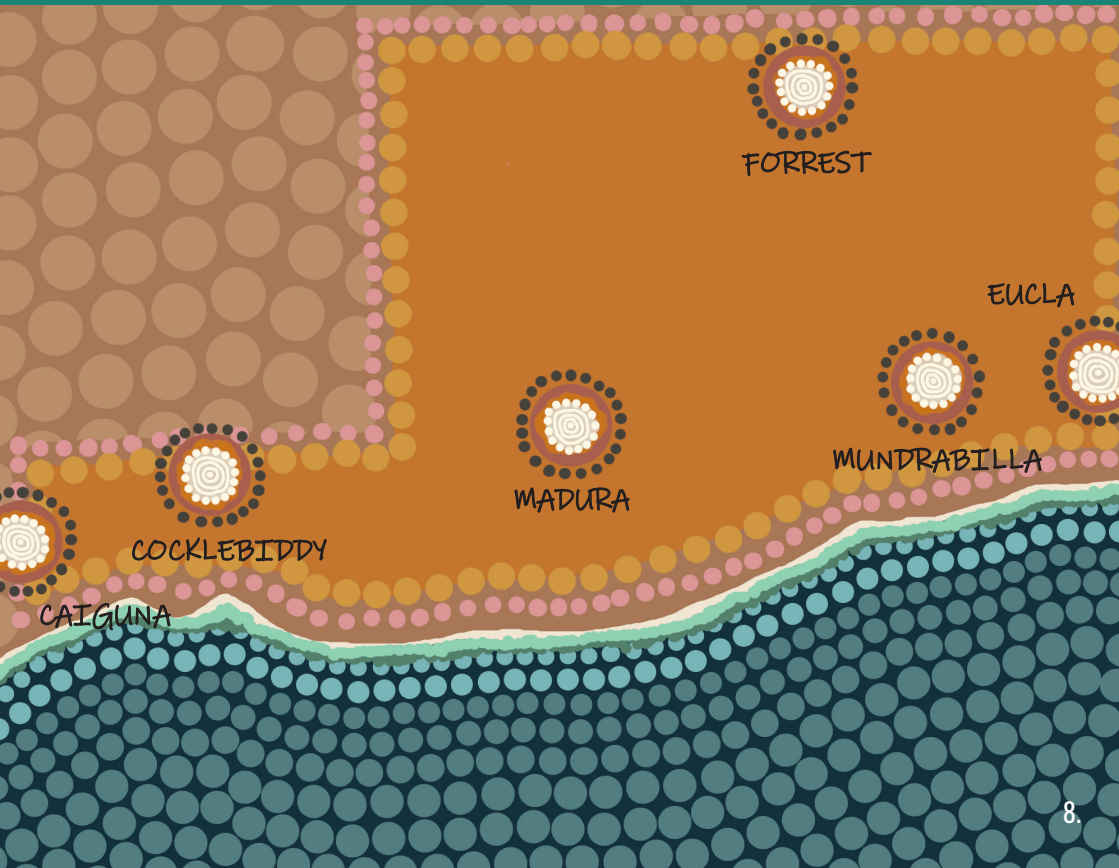


CWP Global (CWP) is a renewable energy developer with expertise in all phases of project development. CWP manages and owns renewable energy projects worldwide and is currently developing eight large-scale green hydrogen hubs across three continents. Recently, CWP secured a strategic investment from Copenhagen Infrastructure Partners for projects in its green hydrogen portfolio.

WA MIRNING PEOPLE

The Mirning Traditional Owners' native title rights in Western Australia were recognised by the Federal Court on October 24th, 2017. Their Native Title Determination was handed down at Low Point after 18 years of perseverance by the Mirning People. WA Mirning traditional lands cover 32,711 square kilometres stretching from the South Australian border to Caiguna in the west, and from the low water mark in the south, to the transcontinental rail line in the north.

Mirning Traditional Lands Aboriginal Corporation RNTBC (MTLAC), was established by the Mirning People in 2019 to manage their Native Title rights and interests in Western Australia and is governed by a 13-member board.

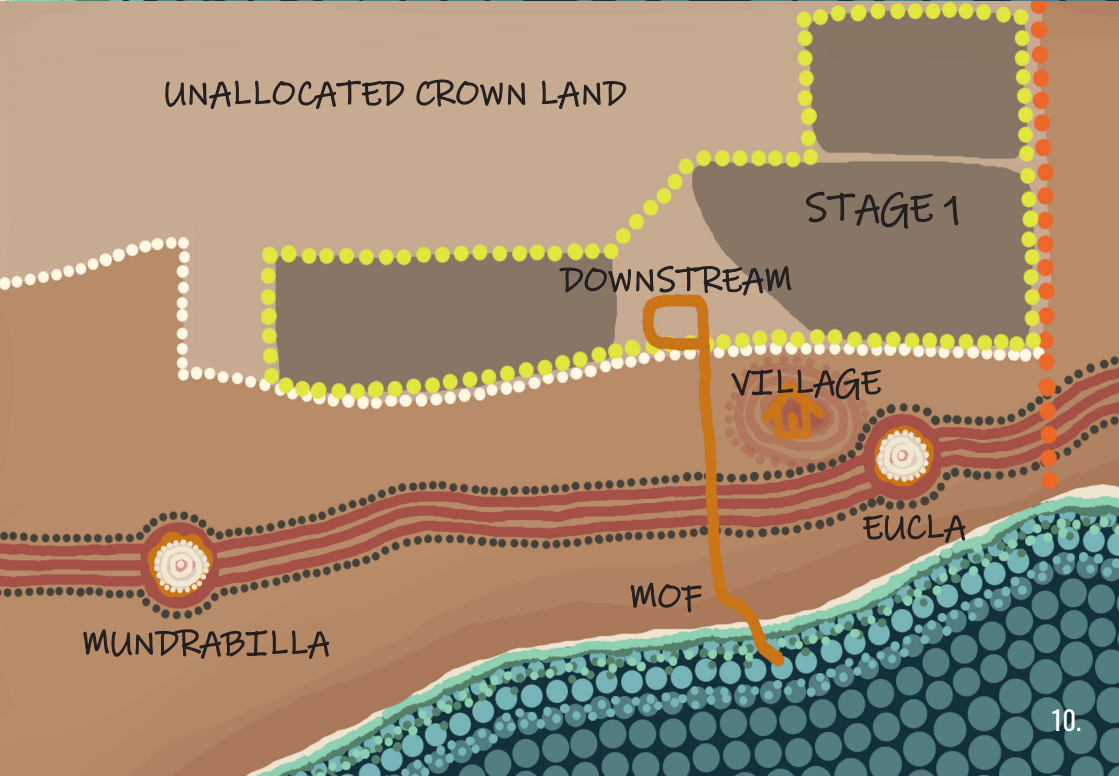


WHAT WILL STAGE 1 OF THE WGEH PROJECT LOOK LIKE?

WGEH Stage 1 will cover an area of approximately 1900 square kilometres and will produce about 6-8 GW of wind and solar power, and around 330,000 tonnes of green hydrogen each year.

Stage 1 of the project will include the following:

- 15km No-Go (exclusion) zone north of the escarpment. No development or work will occur in this area without MTLAC's written consent.
- Potential East village or town which is located near to Eucla.
- Wind and solar power generation, electrolysis equipment, and electrical and hydrogen infrastructure.
- An area for converting green hydrogen into green fuels and potentially other products (Downstream).
- Supporting infrastructure like a marine offloading facility (MOF), desalination plant, and dedicated hubs for workforce and commercial needs.
- Roughly 100 workers to start the first construction activities.
- Roughly 1000 workers to build and operate Stage 1 of the project.



INFORMED COMMUNITIES

WGEH will continually engage and consult with Mirning and neighbouring First Nations communities. Our engagement and consultation will allow the project to record any concerns or opportunities from the communities and co-develop ways to minimise and manage any impacts, or how best to make the most of an opportunity.

WGEH is committed to the principles of Informed Communities and will support independent experts to review agreements before they are finalised to ensure that it is fair for community and the WGEH project.



PRESERVATION & PROTECTION OF CULTURAL HERITAGE & ENVIRONMENT

WGEH believes that it can co-design, plan and build this project with the Mirning peoples' support.

Critical to the success of this belief is the regular and ongoing training of all WGEH staff and contractors in developing their Cultural knowledge and competencies. This applies to the history of Mirning peoples, working on Mirning Country and more broadly, working with First Nations peoples.



TRAINING, EMPLOYMENT & ECONOMIC DEVELOPMENT

Many materials and equipment will eventually be manufactured on Mirning Country, which will provide opportunities for pre-employment, employment training and upskilling of Mirning and neighboring First Nations communities.

Employment, training and upskilling will not be limited to just entry-level laboring, manufacturing or construction jobs, but also include supervisor, management and executive roles.

WGEH is committed to developing a multi-generational skilled Mirning and First Nations workforce that can build and operate the WGEH project into the future.

STRONG FAMILY STRONG COMMUNITY

WGEH is exploring a different way to build and operate the project that doesn't depend on fly-in, fly-out (FIFO) workers. Long term, FIFO work is bad for families as mum or dad need to leave their kids and Country for several weeks each time which is proven to have bad outcomes for the family. This affects the community's overall health, social, economic and educational well-being.

WGEH is committed to developing towns or villages that are in driving distance of the project so that mums and dads can leave in the morning for work and be back home in time for dinner on the same day.

Keeping the family together results in positive outcomes for both the family and wider community.



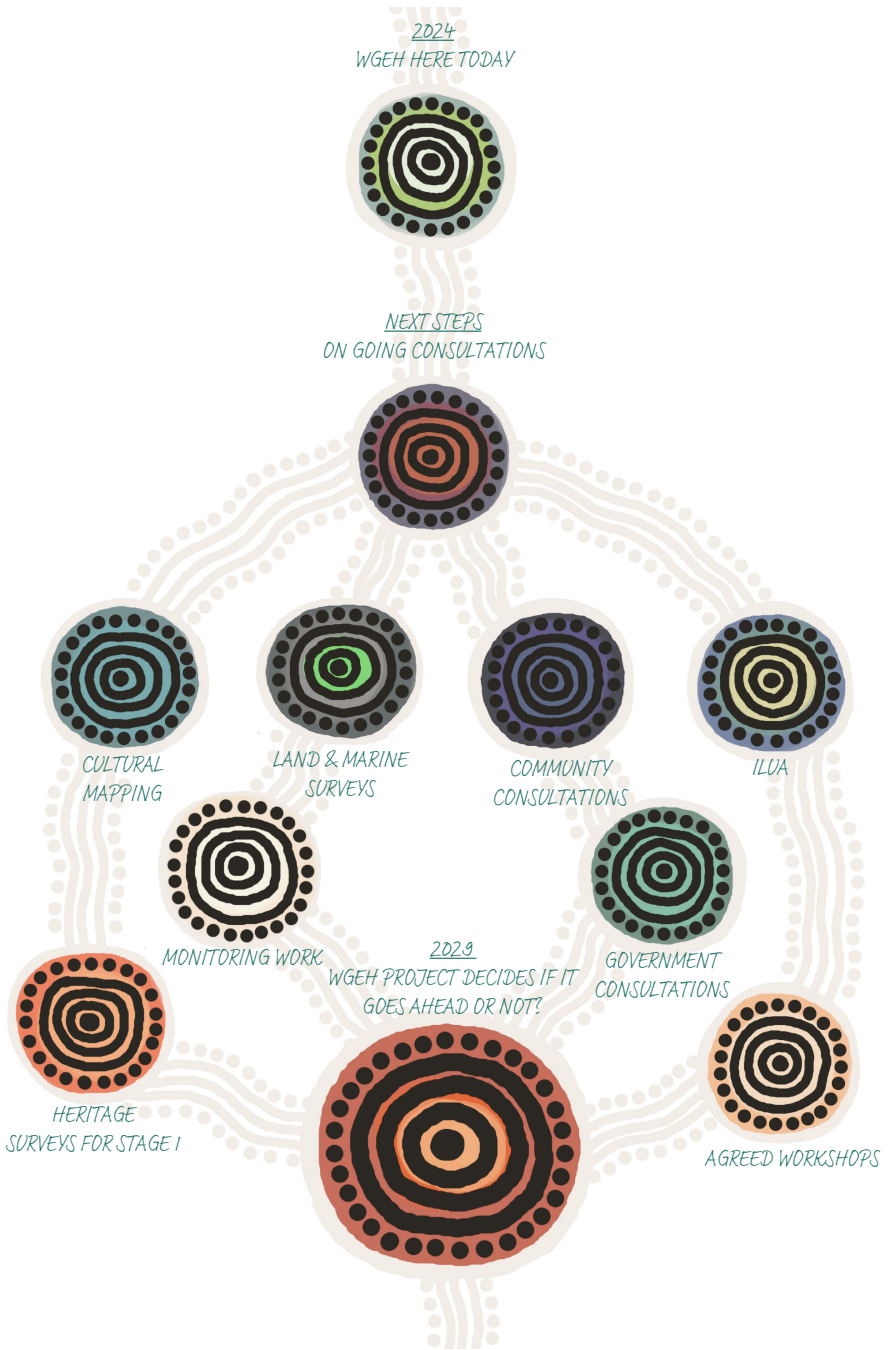
WORK COMPLETED SO FAR

During the early development phase, WGEH has been actively gathering important information for business decisions and to meet government requirements.

Key activities include:

- Installing wind and solar monitoring equipment to collect data.
- Conducting environmental studies across the project area to understand the different types of vegetation and animal habitats, as well as ocean surveys.
- Cultural mapping of WA Mirning Country (on-going)
- Consulting with MTLAC's Heritage committee on Cultural Heritage survey work. This work respects sensitive areas, including Tjukurpa where no construction will occur without MTLAC's written consent.
- Established a 15km no-go (exclusion) zone north of the escarpment line where no development will occur without MTLAC's written consent.

WHAT NEXT?





WESTERN GREEN
ENERGY HUB

Level 3, 1 Havelock St
West Perth. WA 6005
(w) www.wgeh.com.au
(e) info@wgeh.com.au