

## WHAT'S GOING ON AT SITE RIGHT NOW?

November 23

As part of the early project development phase, WGEH has been undertaking considerable on-ground work. This relates to the gathering of important information, some required for business decision making, some to satisfy government statutory process.

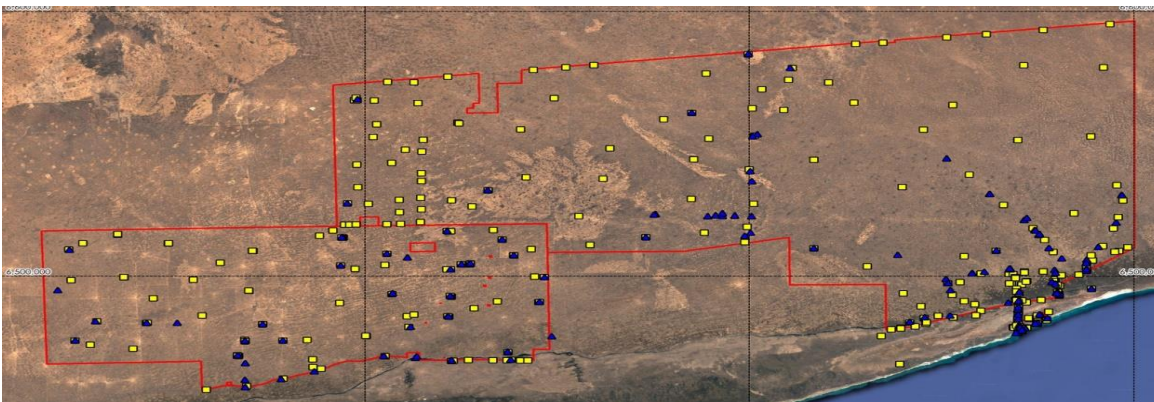
Critical wind and solar monitoring equipment has been installed to collect real time data. A minimum 12 months monitoring is required to properly assess the site's wind and solar resource.

Environmental studies continue across the full site, including vegetation, fauna habitats and the assessment of the occurrence of significant flora and fauna. These studies also include the marine environment, where oceanographic and biodiversity studies have taken place.

Cultural heritage work is also continuing with Mirning traditional owners and knowledge holders who, as custodians of the land on which a project is to be situated, have deep spiritual and heritage connections. Importantly, this work will recognise highly sensitive and protected areas (including Tjukurpa - song lines), where no development will take place.

Both sets of information are presently under-represented in State databases. WGEH-related assessments will add new scientific, cultural, landscape and environmental information for broader use.

### Environmental assessments



### Cultural heritage assessments

